

HEIN-HE90

*Ideas for cleaning*

# FRONT-LOADER CABIN CLEANING SYSTEM



### **HEIN-HESØ – cleanliness in perfection**

HEIN-HESØ GmbH has been at the service of its discerning customers as a competent partner for individual industrial cleaning plants for 25 years now. The second generation of the Hein family is already taking care of the cleaning of workpieces of all kinds at the highest level. Having been accompanied by continuous growth, the specialist for industrially used cleaning machines is still looking optimistically to the future today.

### **Worldwide distribution of German/Danish quality**

From its headquarters in Lohmar, HEIN-HESØ distributes its highly specialised systems within Germany and Europe as well as overseas. The customer gets everything from a single source, from the design and manufacture through to the commissioning and maintenance, thus guaranteeing a smooth and trouble-free process.

### **Our recipe for success – customer orientation**

Just like every customer, each industrial cleaning system that HEIN-HESØ manufactures is unique. The individual requirements and wishes of the customer are decisive during the planning and design of each machine.

The cleaning machine professionals are also open to the customer's own ideas.

Personal contact is always to the fore, because that is the only way to find the right solution for every task.





System with special accessories

### **The highest standards necessitate maximum quality**

The front-loader systems are conceived as **all-stainless steel cleaning systems** for the treatment of large, heavy components in both inline and central operation. Their sophisticated design enables the highest cleanliness requirements to be met in the automotive industry, in die-casting and hydraulics manufacturing plants and in general workshops of all kinds. In addition, the systems are ideally suited for interim cleaning, if necessary with several treatment steps (e.g. washing, rinsing and drying). Feeding systems such as pallet receptacles, workpiece holders or chain conveyors for automatic loading and unloading are possible at the customer's request.

**Individual cleanliness specifications can be fulfilled optimally in co-ordination with the customer with the HEIN-HESØ front-loader systems.**

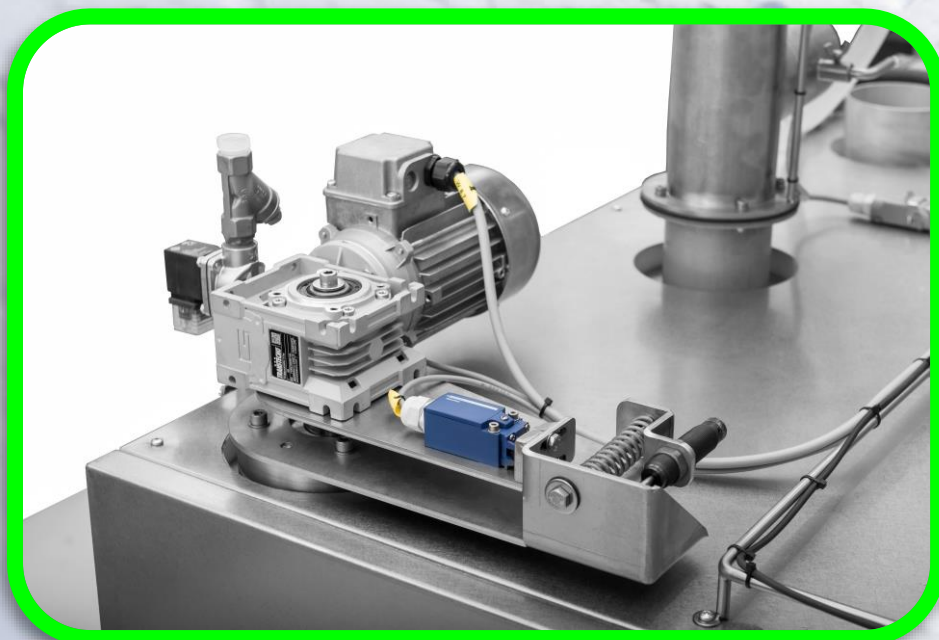




Why move workpieces that very often have a high part weight when there are technically better solutions?

The **square orbiting nozzle arm** developed by HESØ A/S in collaboration with the Technical University of Aarhus offers high operating reliability and highly efficient cleaning.

**While keeping the same washing chamber size, this technology increases the usable washing area by more than 25%**



An extremely robust mechanical **torque monitor** with adjustable forced switch-off effectively protects components and the nozzle system orbiting in a square against damage.



The circulating cleaning media are fed in the return line via easily accessible **stainless steel strainers**.

The strainers are easy to remove for cleaning.

A motor-driven switching manifold switches between the media.

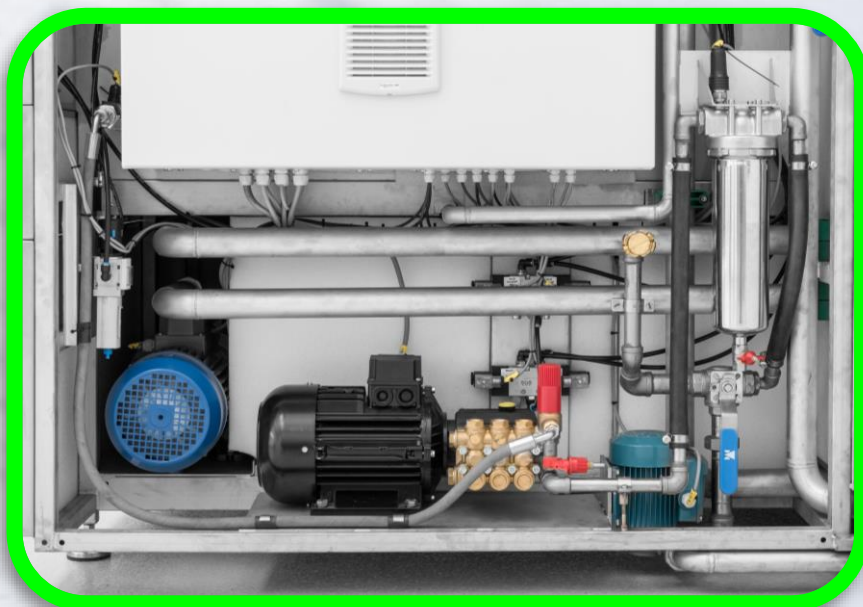
**Advantage:** a central drain from the cabin and thus no carry-over of media, since the cabin empties out completely. This results in operation that is insensitive to dirt and free from seals.



An option for **manual cleaning\*** **inside the cabins** is offered by arm holes that are located in a comfortable working position and provided with fixed, exchangeable work gloves. A large window fitted with safety glass allows optimum checking of the washing result. In normal operation the arm holes are secured by a **flap with a limit switch** so that reaching inside during the normal washing operation is not possible.



**A high-pressure pump\*** makes it possible to clean parts with stubborn dirt manually – independent of the normal washing cycle. A separate filter unit protects the pump against contamination.



The **rectangular design** of the washing chamber allows intensive cleaning in particular of long components. An orbital rotating nozzle system is possible here, too.

**Advantage:** extremely space-saving design tailored to the components.

\* Optional







#### Comfortable and safe loading and unloading

Manually or automatically **extendable stainless steel washing grates** mounted on roller bearings enable safe and comfortable loading and unloading of the systems. This takes place using mobile loading trolleys (see illustration) or permanently mounted loading ramps. Pressure filters in appropriate versions are available for increased cleanliness requirements or heavy soiling.

Our technicians are ready and willing to find the best possible solution according to the customer's specifications. All of this is implemented in the assembly according to the high HEIN-HESØ quality guidelines and our endeavours to manufacture to the latest technical standards at all times. The results of this are systems that do what is expected of them and thus, together with a long service life, lead to high customer satisfaction.





All electrical components and installations are state of the art and meet the strict requirements of the VDE standards and the currently valid EU standards.

Our customers can choose between a simple contactor controller with **LOGO** support or a **PLC\***. The system is operated via a **touch screen\***, if desired with Profibus or Profinet connections\* for communication with factory systems or loading and unloading systems.

\*Special equipment

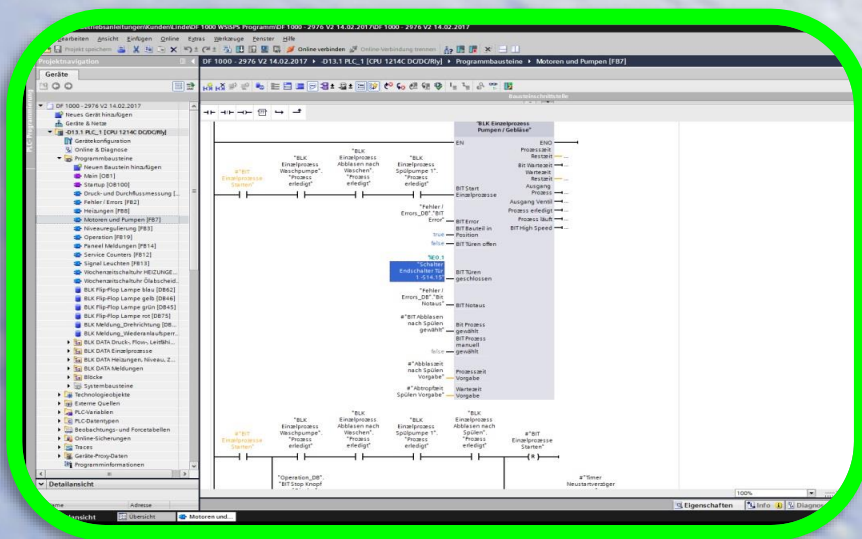


All parameters remain freely selectable and adjustable. Customer wishes regarding function and equipment are naturally fulfilled.

**In-house programming** enables adaptation of the controller to all customer-specific requirements.

Industry 4.0 – no problem for us: Connection to master computer via OPC-UA or the controllers of peripheral devices such as handling, distribution belts or weighing systems.\* Just ask us!

\* Optional







### Each system is unique

The modular design allows a wide range of configuration options when planning the system, so that the cabins can be adapted optimally to the foreseen task. A wide range of equipment options makes individual solutions possible. All cleaning systems are available in various sizes and versions:

**For example, cabins can be connected in a row to form continuous-flow systems for large, bulky components in high numbers.**

### Compact design

Production space is expensive and usually tight. That's why our motto is:

as large as necessary and as small as possible!

### Low maintenance costs through ease of maintenance

Music to the ears of the maintenance staff: Each functional and working part of the system is easily accessible. The complete substructure is accessible via removable insulating panels. Smooth stainless steel surfaces enable fast cleaning of the system.

The machine is fully insulated both thermally and acoustically.





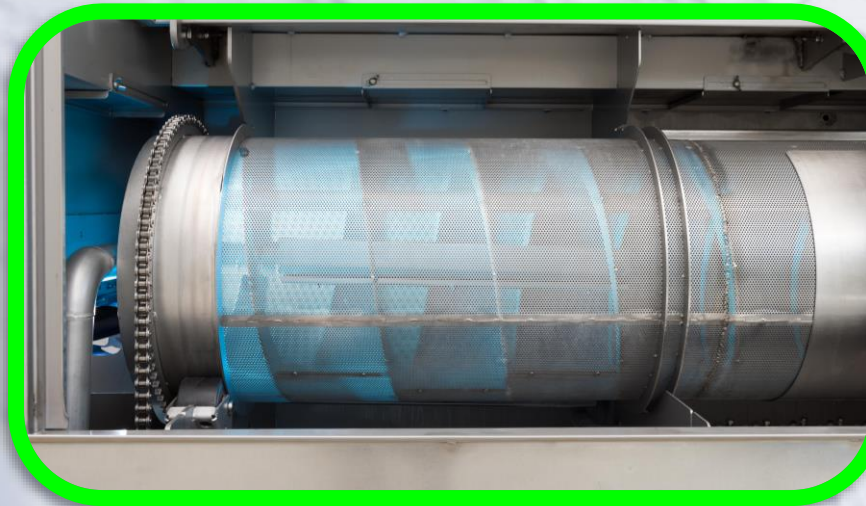
## Further types of system from our range:



The **COMPO-CLEANER** – an extremely robust, universal **continuous-flow system**. The modular design allows a wide range of configuration options when planning the system, so that the COMPO-CLEANER can be adapted optimally to the foreseen task. A wide range of equipment options makes individual solutions possible. The cleaning systems can be supplied in various sizes and passage widths.



The extremely stable **stainless steel top-loaders from the RT and DT series** with different washing chamber sizes can be adapted individually to requirements. **The "DT" series is fully insulated** (see fig.)



**The DRUM CLEANER** – the robust and powerful **continuous-flow drum cleaner** with screw conveyor transport for the washing, rinsing and drying or coating of bulk goods or hollow parts. The all-stainless steel system is ideal for intensive interim or final cleaning in a production line directly following a production plant.



### **The BLOW-CLEANER – cleaning with compressed air**

Significantly improves the circulating air at the place of work and prevents misty production halls.

The machine's environment such as measuring instruments, workpieces, racks, shelves, hall floors, etc. stays clean.

**THE RESULT - IMPROVED OCCUPATIONAL HEALTH AND SAFETY!**  
No injuries due to flying swarf, considerable lowering of the noise level.





### **The customer's wishes and requirements come first for us**

Together with our knowledge and decades of experience, they form the basis on which each individual machine is tailored entirely to the customer's needs.

Personal contact with the customer is particularly important to us, which is why HEIN-HESØ also exhibits at many important international trade fairs.

During the planning of a project we gladly absorb our customers' ideas in order to develop the best machine for them.

The customer's presence is very welcome when we carry out washing tests in our new pilot plant.

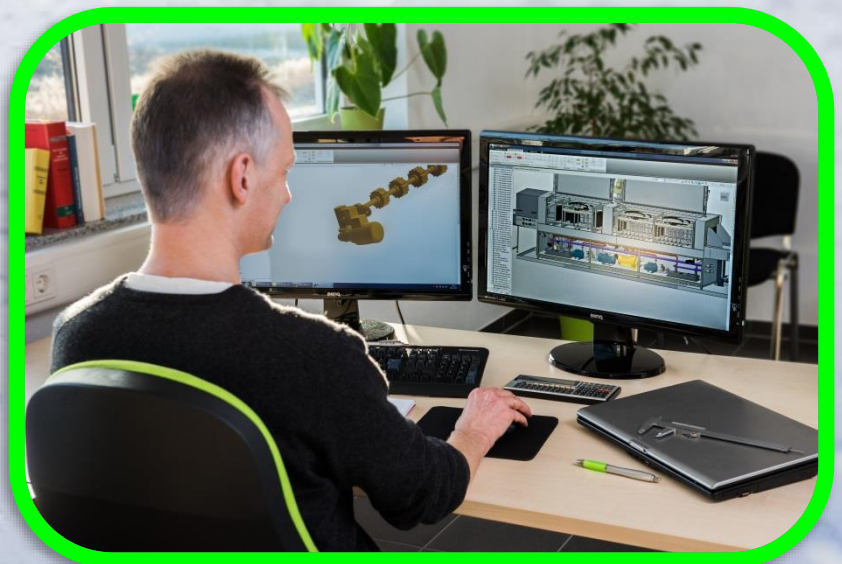


### **Quality is created only at employee-friendly, modern workplaces**

Just as we do today, we will continue in future to use exclusively the best manufacturing methods and to develop them further for our needs.

Continuous further training is a matter of course for our highly motivated employees and guarantees knowledge of the state of the art at all times.

Our comprehensively trained technicians meet all industrial requirements in practice.





## Company history

- 1990 Establishment of "Werner Hein Industrievertretung"
- 1995 Distribution agreement with "HESØ A/S"  
(manufacturer of industrial cleaning plants from Vejle, Denmark)
- 1999 Establishment of "HEIN-HESØ GmbH"  
by Werner Hein and HESØ A/S
- 2002 Dipl. Ing. Stefan Hein joins the company  
as Works Manager at the Lohmar site
- 2010 Dipl. Ing. Stefan Hein becomes Managing Director
- 2014 Erection of new office and technical premises, including  
large hall for system exhibition and washing tests in Lohmar

## Contact data:



HEIN-HESØ GmbH  
Walterscheid-Müller-Straße 7  
53797 Lohmar

Phone ++49 (0)2246 / 94868-0  
Fax: ++49 (0)2246 / 94868-10

info@hein-heso.de  
www.hein-heso.de