

HEIN-HESS
Ideas for cleaning

**CONTINUOUS-FLOW CLEANING PLANT
COMPO-CLEANER**



HEIN-HESØ – purity in perfection

HEIN-HESØ GmbH has been at the service of its discerning customers as a competent partner for individual industrial cleaning plants for 25 years now. The second generation of the Hein family is already taking care of the cleaning of workpieces of all kinds at the highest level. Having been accompanied by continuous growth, the specialist for industrially used cleaning machines is still looking optimistically to the future today.

Worldwide distribution of German/Danish quality

From its headquarters in Lohmar, HEIN-HESØ distributes its highly specialised plants within Germany and Europe as well as overseas. The customer gets everything from a single source, from the design and manufacture through to the commissioning and maintenance, thus guaranteeing a smooth and trouble-free process.

Our recipe for success – customer orientation

Just like every customer, each industrial cleaning plant that HEIN-HESØ manufactures is unique. The individual requirements and wishes of the customer are decisive during the planning and design of each machine. The cleaning machine professionals are also open to the customer's own ideas. Personal contact is always to the fore, because that is the only way to find the right solution for every task.



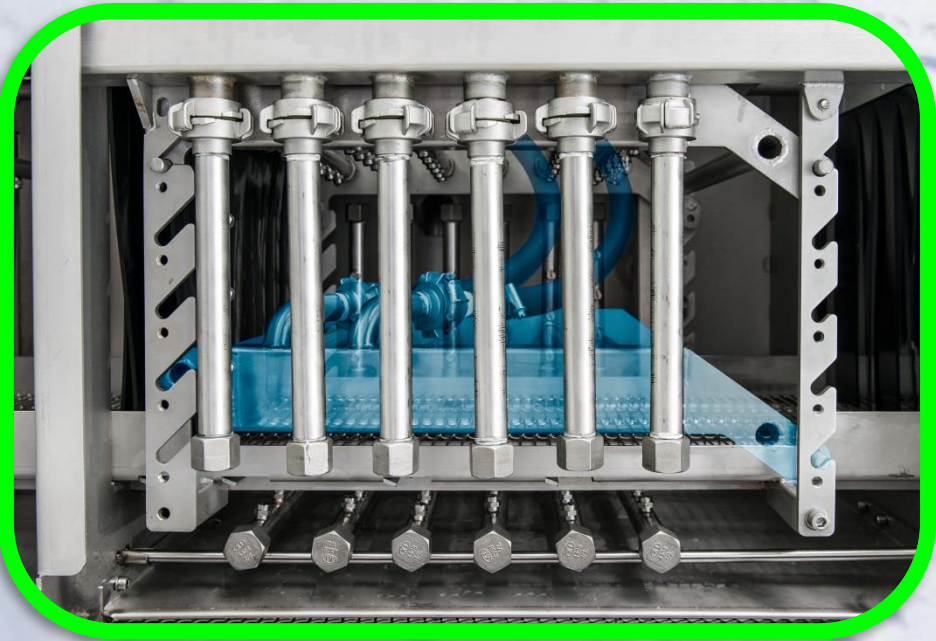
The highest demands require top quality

The COMPO-CLEANER is designed as an **all-stainless steel continuous flow cleaning plant** for both inline and central operation. Its modular design enables the highest cleaning requirements to be met in the automotive industry, at die-cast and sintered metal manufacturers, at hydraulic manufacturers and many others. Moreover, the COMPO-CLEANER is ideally suited for interim cleaning, if necessary with a reduced number of treatment steps. The objects to be cleaned pass through the various treatment zones (e.g. washing, rinsing, drying) on a conveyor belt.

Other conveying systems such as pallet receivers or chain conveyors are possible, depending on the customer's requirements. Individual cleaning tasks can be accomplished ideally by the COMPO-CLEANER in consultation with the customer.



The **pressure adjustment** of the pipework located on the outside of the tunnel takes place manually. Thanks to the ease of access it is very user-friendly. Alternatively, a PLC can take care of the monitoring of all possible operating parameters.



The **nozzle banks** in the washing zone are equipped with screwable stainless steel nozzles and bayonet connections*. They are easy to dismantle. The workpiece to be cleaned is always wetted from all sides! The nozzle banks can be manufactured in a height-adjustable version if necessary*



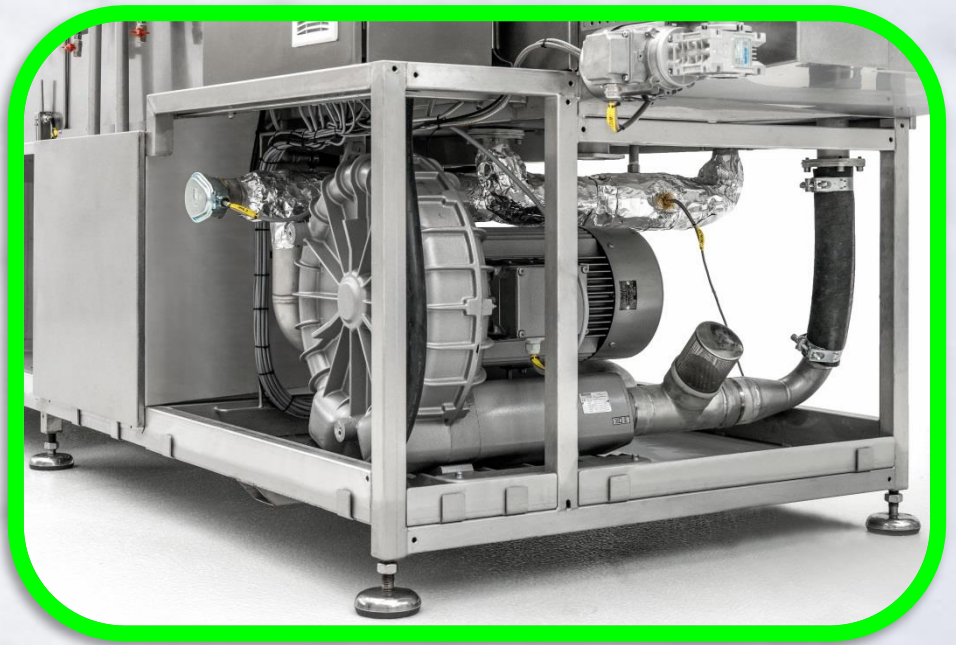
The circulating cleaning medium is fed in the return line via easy to reach **stainless steel strainers**. The strainers can be removed easily for cleaning. Nozzle protection filters are standard; larger pressure filters are optionally possible.

An automatic level controller with detergent dosing* feeds fresh water to the plant. A connection to the water supply is required for this.

*optional

For the **drying** of the cleaned workpieces, the side-channel compressor generates hot air by means of a downstream heating element.

The drying temperature is freely selectable between about 60 and 120 °C.



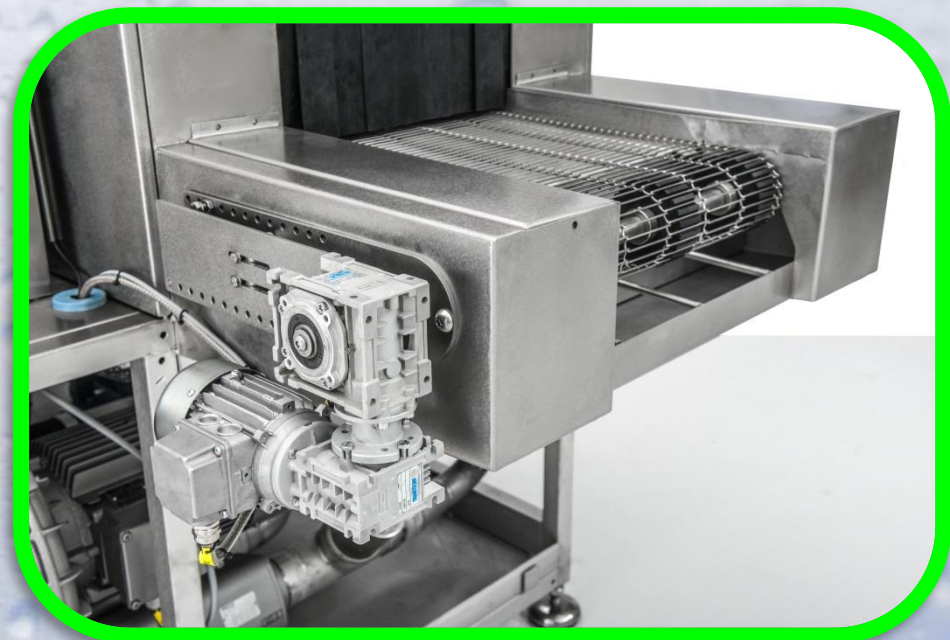
The actual **drying** is done by **height-adjustable air blades**, which can be mounted individually on all sides.

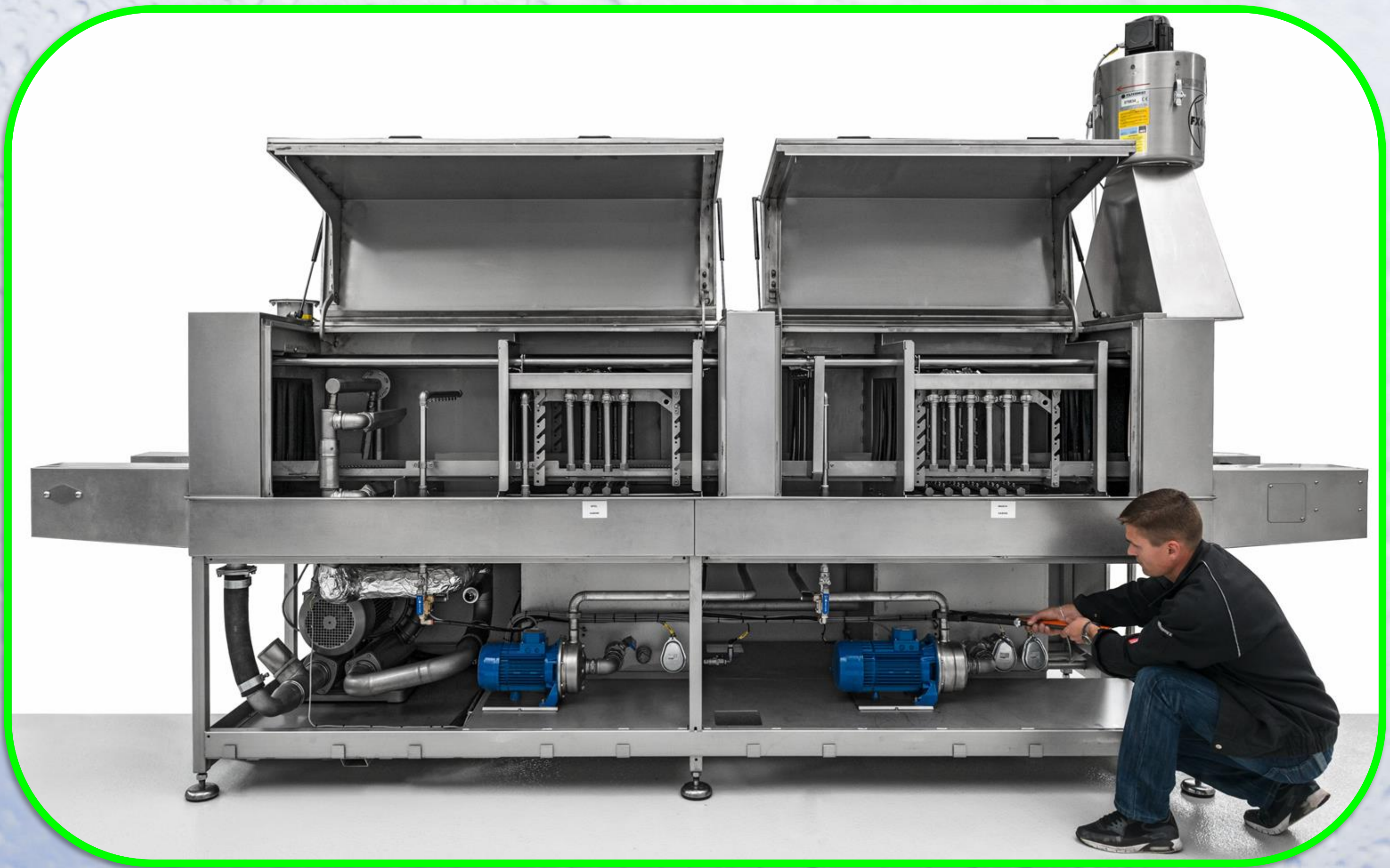
In addition there is a possibility to intensify the hot-air drying and support the drying of complex components by means of an upstream compressed air blow-off system.



A mechanical **torque monitor** with adjustable forced cut-off protects components and conveying system against damage.

The conveyor belts are available in various sizes and versions.





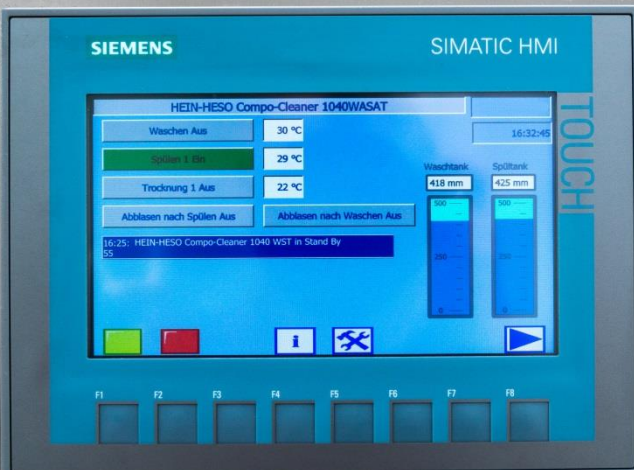
Low maintenance costs through ease of maintenance

Music to the ears of the maintenance staff: every functional and working part of the COMPO-CLEANER is easy to reach. The continuous-flow tunnel is particularly easy to access via large insulated flaps, which are monitored by limit switches. The complete substructure is accessible via removable insulating panels. Depending on the tank volume, heating rods can be replaced quickly even if the washing and rinsing tank is full. The machine is completely thermally and acoustically insulated. (Illustration with special equipment)



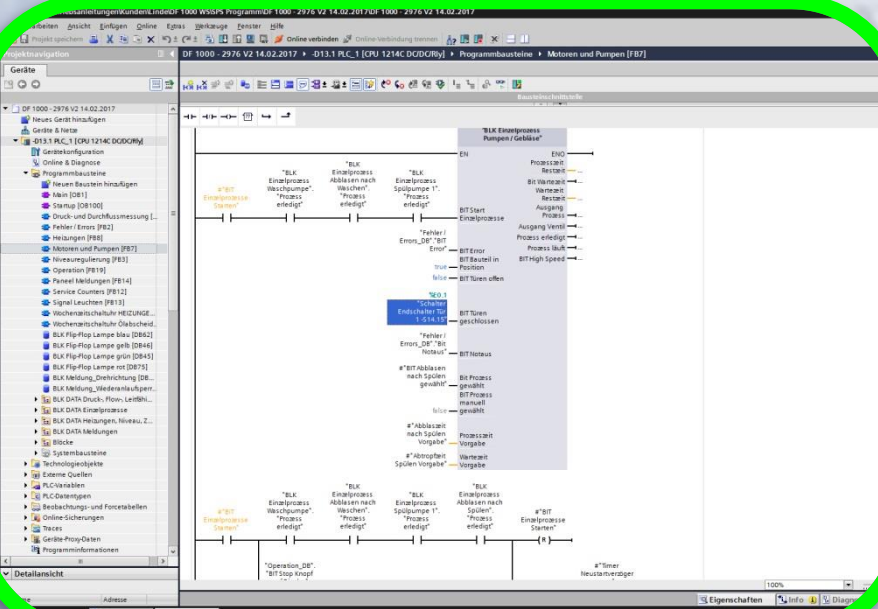
All electrical components and installations are state of the art and meet the strict requirements of the VDE standards and the currently valid EU standards.

Our customers can choose between a simple contactor controller with **LOGO** support or a **PLC***. The Compo-Cleaner is operated here via a **touch screen***, if desired with Profibus or Profinet connections for communication with factory systems or loading and unloading systems.



All parameters remain freely selectable and adjustable. Customer wishes regarding function and equipment are naturally fulfilled.

*Special equipment



In-house programming enables adaptation of the controller to all customer-specific requirements.

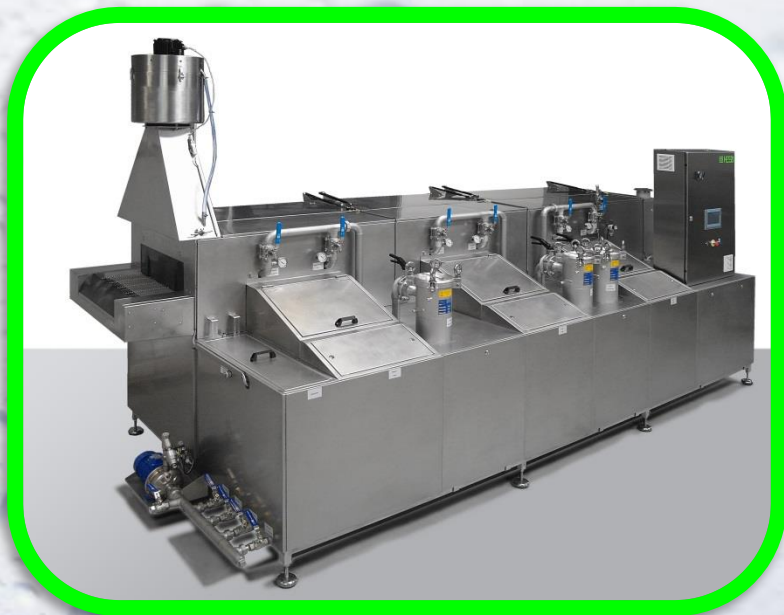
Industry 4.0 – no problem for us: Connection to master computer via OPC-UA or the controllers of peripheral devices such as handling, distribution belts or weighing systems – just ask us.



Each plant is unique

The modular design allows a wide range of configuration options when planning the plant, so that the COMPO-CLEANER can be adapted optimally to the foreseen task. A wide range of equipment options makes individual solutions possible.

The cleaning plants can be supplied in various sizes and passage widths.



Compact design

Production space is expensive and usually tight.

That's why our motto is:
as large as necessary and as small as possible!



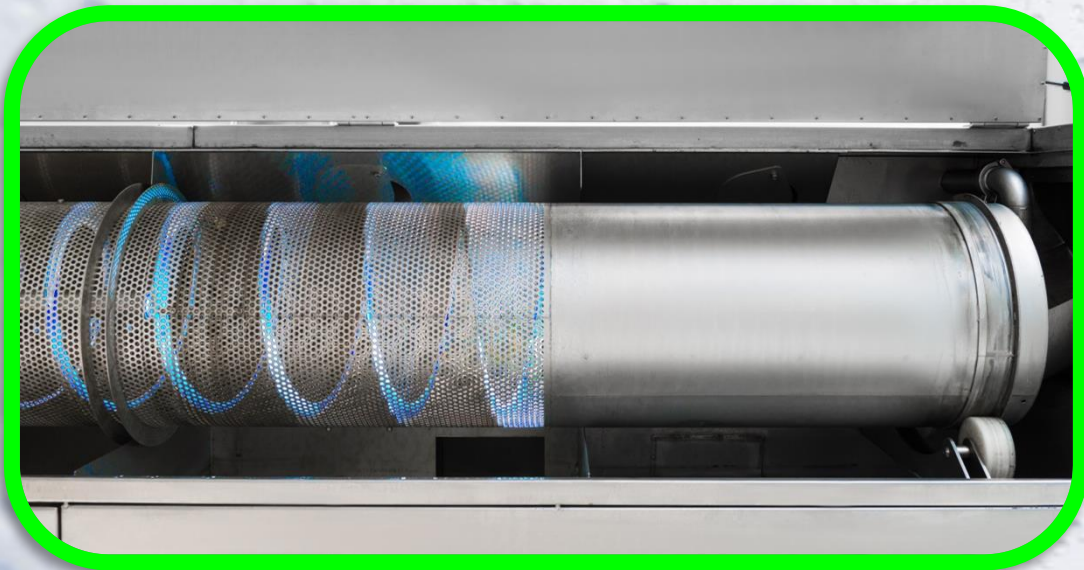
Further types of plant from our range:



Universal and robust **front and top-loaders** with different washing chamber sizes.

Individually adaptable to the requirements.

The plants can be used both as central and decentralised washing plants for cleaning.



DRUM-Cleaner – the extremely stable, robust and powerful **continuous-flow drum cleaner** with conveying screw transport for the washing, rinsing and drying or coating of bulk goods or hollow parts. The all-stainless steel plant is ideal for intensive interim or final cleaning in a production line directly following a production plant.



BLOW-CLEANER Cleaning with compressed air

Decisively improves the recirculating air at the workplace; no more misty production halls.

The machine's environment such as measuring instruments, workpieces, racks, shelves, hall floors, etc. stays clean.

IMPROVED OCCUPATIONAL HEALTH AND SAFETY!

No injuries due to flying swarf, considerable lowering of the noise level.



The customer's wishes and requirements come first in the development of our machines.

Together with our knowledge and decades of experience, they form the basis on which each individual machine is tailored entirely to the customer's needs.

Personal contact with the customer is particularly important to us, which is why HEIN-HESØ also exhibits at many important international trade fairs.

During the planning of a project we gladly absorb our customers' ideas in order to develop the best machine for them.

The customer's presence is very welcome when we carry out washing tests in our new pilot plant.

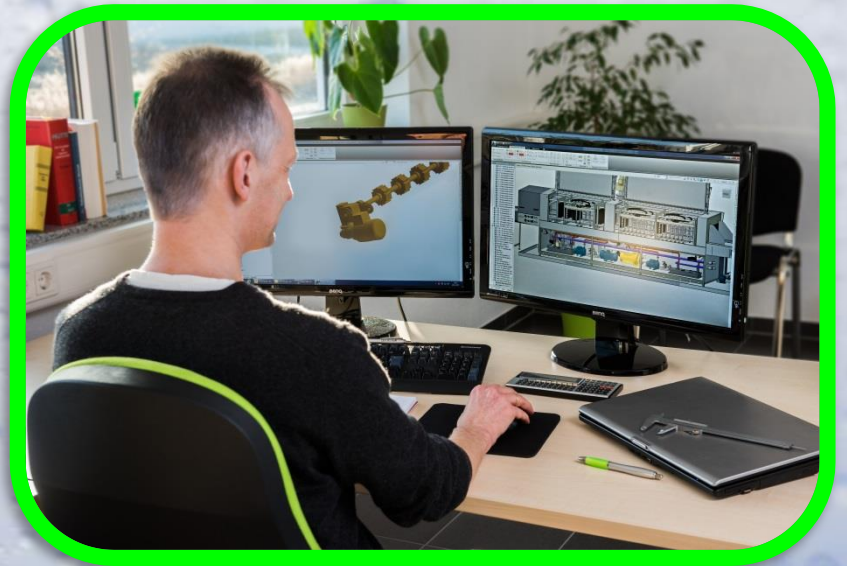


Quality is created only at employee-friendly, modern workplaces.

Just as we do today, we will continue in future to use exclusively the best manufacturing methods and to develop them further for our needs.

Continuous further training is a matter of course for our highly motivated employees and guarantees knowledge of the state of the art at all times.

Our comprehensively trained technicians meet all industrial requirements in practice.



Company history

- 1990 Establishment of "Werner Hein Industrievertretung"
- 1995 Distribution agreement with "HESØ A/S"
(manufacturer of industrial cleaning plants from Vejle, Denmark)
- 1999 Establishment of "HEIN-HESØ GmbH" by Werner Hein and HESØ A/S
- 2002 Dipl. Ing. Stefan Hein joins the company as Works Manager at the Lohmar site
- 2010 Dipl. Ing. Stefan Hein becomes Managing Director
- 2014 Erection of new office and technical premises, including large hall for plant exhibition and washing tests in Lohmar

Contact data:



HEIN-HESØ GmbH
Walterscheid-Müller-Strasse 7
53797 Lohmar

Phone: ++49 (0)2246 / 94 868-0
Fax: ++49 (0)2246 / 94 868-10

info@hein-heso.de
www.hein-heso.de